

# 2018

## Community Assessment Annual Review and Update



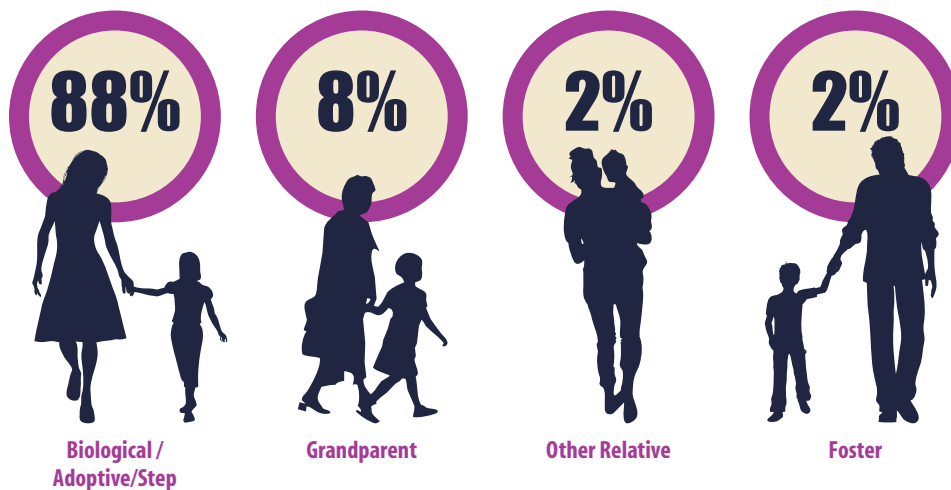
### Family Well-Being

#### Incarceration

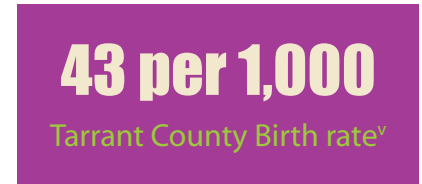
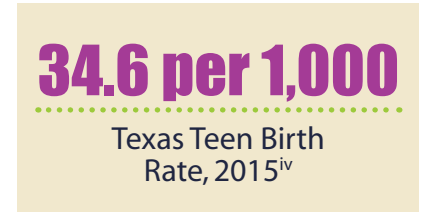
About 150,000 adult men and women were incarcerated at any given time in county and state correctional facilities in Texas in 2016 and over 10,000 of these individuals were convicted in Tarrant County. Texas Department of Criminal Justice released 4,937 inmates back to Tarrant County in 2016.<sup>i</sup>

#### Children Living with Grandparents (as Guardian)

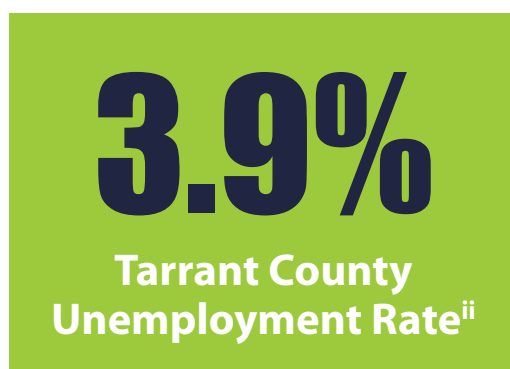
Child Population by Primary Caregiver, 2016<sup>vi</sup>



#### Teen Parents



#### Unemployed



#### Child Abuse

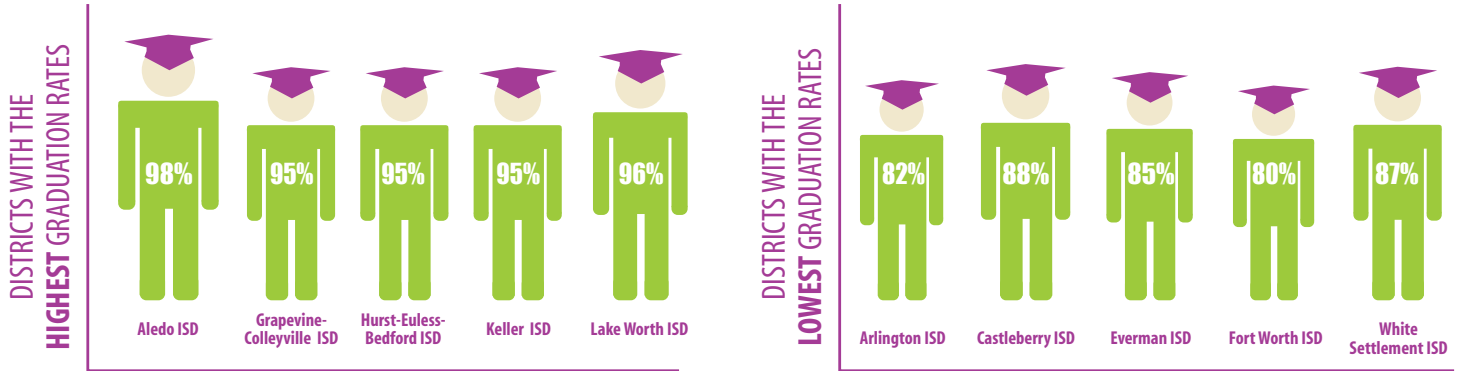
5,162 Confirmed Victims in Tarrant County, 2016<sup>vii</sup>

COUNTY COMPARISON		
Confirmed Victims of Child Abuse & Neglect, 2016 <sup>viii</sup>		
County	Confirmed Victims	Victims/1,000 Child Population
Bexar County	4,550	9.03
Dallas County	4,535	6.59
El Paso County	2,015	8.03
Harris County	5,812	4.80
Tarrant County	5,162	9.67
Travis County	2,105	7.40

# Families as Learners

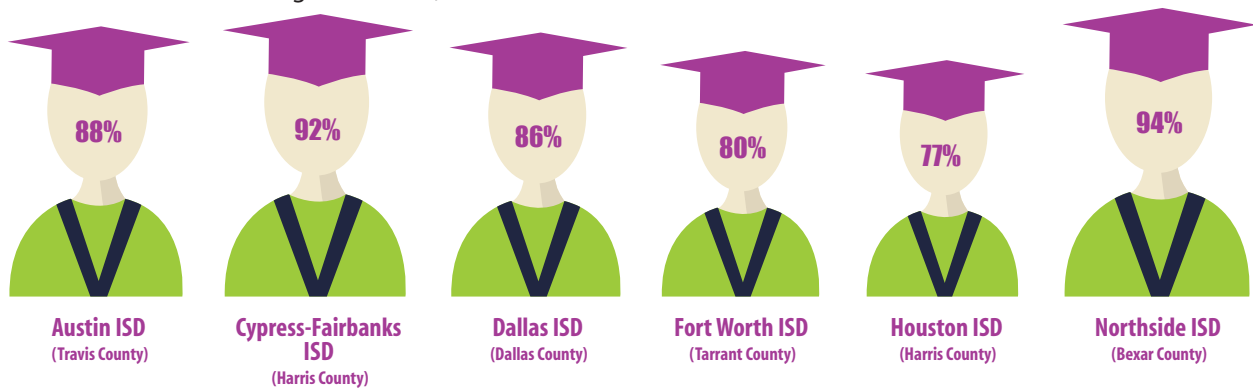
## Lack of High School Diploma

Graduation Rate in Tarrant County (Class of 2016)<sup>ix</sup>



## County Comparison

Graduation Rates for the State's Largest Districts, 2016<sup>x</sup>



- i Texas Department of Criminal Justice. Statistical Report Fiscal Year 2016. Retrieved from [www.tdcj.state.tx.us/publication&statistics/Statistical\\_Report\\_FY2016](http://www.tdcj.state.tx.us/publication&statistics/Statistical_Report_FY2016)
- ii United States Department of Labor (2016). Bureau of Labor Statistics. Mapping Unemployment Rates (States and Counties). Retrieved from [www.bls.gov/subjects/unemployment/State & Local Unemployment Statistics/create customized maps](http://www.bls.gov/subjects/unemployment/State%20&%20Local%20Unemployment%20Statistics/create%20customized%20maps)
- iii Power to Decide the Campaign to prevent Unplanned Pregnancy (2015). Texas Data Retrieve from [https://powertodecide.org/what we do/National and state data](https://powertodecide.org/what%20we%20do/National%20and%20state%20data).
- iv Power to Decide the Campaign to prevent Unplanned Pregnancy. Texas Data Retrieve from [https://powertodecide.org/ what we do/ National and state data](https://powertodecide.org/what%20we%20do/National%20and%20state%20data).
- v Center for Disease Control and Prevention (2015). Retrieved from [www.cdc.gov/Diseases & Conditions/Tools & Resources/ Community Health Status Indicators](http://www.cdc.gov/Diseases%20&%20Conditions/Tools%20&%20Resources/Community%20Health%20Status%20Indicators)
- vi U.S. Census Bureau (2016). Children Characteristics:2012-2016 American Community Survey 5-Year Estimates. Retrieved from [www.factfinder.census.gov/faces/tableservices/jsf/pages/productview.xhtml?pid=ACS\\_16\\_5YR\\_S1002&prodType+ table](http://www.factfinder.census.gov/faces/tableservices/jsf/pages/productview.xhtml?pid=ACS_16_5YR_S1002&prodType=table)
- vii Texas Department of Family Protective Services (2016) CPS Data Book: CPS Abuse/Neglect Investigations:Victims. Retried from [https://www.dfps.state.tx.us/About\\_DFPS/Data\\_Book/Child\\_Protective\\_Services/Investigations/Victims.asp](https://www.dfps.state.tx.us/About_DFPS/Data_Book/Child_Protective_Services/Investigations/Victims.asp)
- viii Texas Department of Family Protective Services (2016) CPS Data Book: CPS Abuse/Neglect Investigations:Victims. Retried from [https://www.dfps.state.tx.us/About\\_DFPS/Data\\_Book/Child\\_Protective\\_Services/Investigations/Victims.asp](https://www.dfps.state.tx.us/About_DFPS/Data_Book/Child_Protective_Services/Investigations/Victims.asp)
- ix Texas Education Agency (2016). Class of 2016 District Graduation Summary.Compilation Retrieved from <https://rptsrv1.tea.texas.gov/acctres/completion/script/2016/district.html>
- x Texas Education Agency (2016). Class of 2016 District Graduation Summary.Compilation Retrieved from <https://rptsrv1.tea.texas.gov/acctres/completion/script/2016/district.html>

